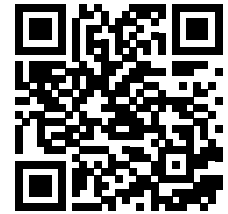


THANKS FOR PURCHASING YOUR COMMANDER LIGHTING.

Installing your new Commander lighting solution will require tools in addition to the products received. Please feel free to contact us with any questions.

IMPORTANT: Upfitter Switch will need to be installed prior to installing your Commander Lighting package. Upfitter switches will vary by manufacturer. Refer to upfitter switch manufacturer for installation wiring.



KIT ELEMENTS:

Before you start, make sure you have all parts and tools.

- (2) Corner strobe lights with mounting hardware
(located inside the base – twist light from base to remove)
- (2) Angled corner light brackets
- (2) 2" x 5" Flood lights
- (4) Stainless steel square accessory track bolts
- (4) Stainless steel washers
- (4) Stainless steel nylock nuts
- (6) Butt Connectors
- (1) 20" Split loon

USEFUL TOOLS (NOT INCLUDED):

- Approved safety glasses
- Torx T25 bit
- 9/16" socket or wrench
- Wire strippers
- Wire crimpers
- Heat gun or other safe heat source for connectors

INSTALLATION



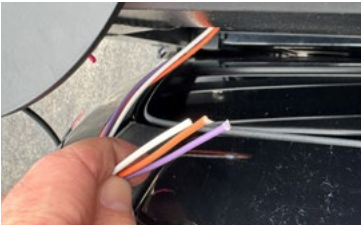
1. Locate one angle light bracket and one corner strobe.
2. Install corner strobe base onto corner bracket with three provided bolts.
3. Install strobe light head onto base and affix to base with three provided bolts down through the top of the light. Be sure to feed base head wires through the base and bracket.



4. Locate one Flood light and bolt onto corner light bracket.
(front or rear hole, your preference)



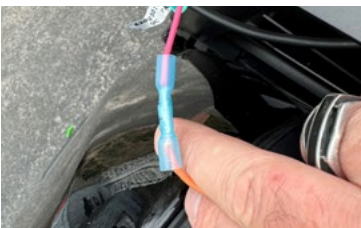
5. Place assembled light bracket on rack and attach using (2) stainless steel square headed bolts.



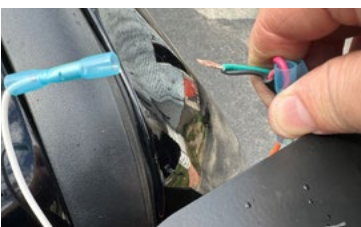
6. Locate the three wires stubbed in the back upper corner of the light box.
You will have a **White** (Ground), **Orange** (Strobe Power), **Purple** (Flood Power).



7. Connect the **Red** wire from the flood light to the **Purple** wire.



8. Connect the **Red** wire from the strobe light to the **Orange** wire.



9. Connect the **Green** wire from the strobe and the **Black** wire from the flood light to the **White** wire.



10. Heat butt connectors to shrink and make a weather tight seal.



11. Add wire loom to exposed wires to conceal & finish.



12. Connect the wires to the upfitter switches in the cab.

(**NOTE:** Upfitter switch will need to be pre installed onto truck and wire configuration will vary by switch model. Refer to upfitter switch manufacturer for installation wiring.)



13. Verify all lights work as should and enjoy!

ADDITIONAL NOTES



Once your Commander Lighting is installed, be sure to share an image of your truck with us at magnumtruckracks.com/upload-your-truck.